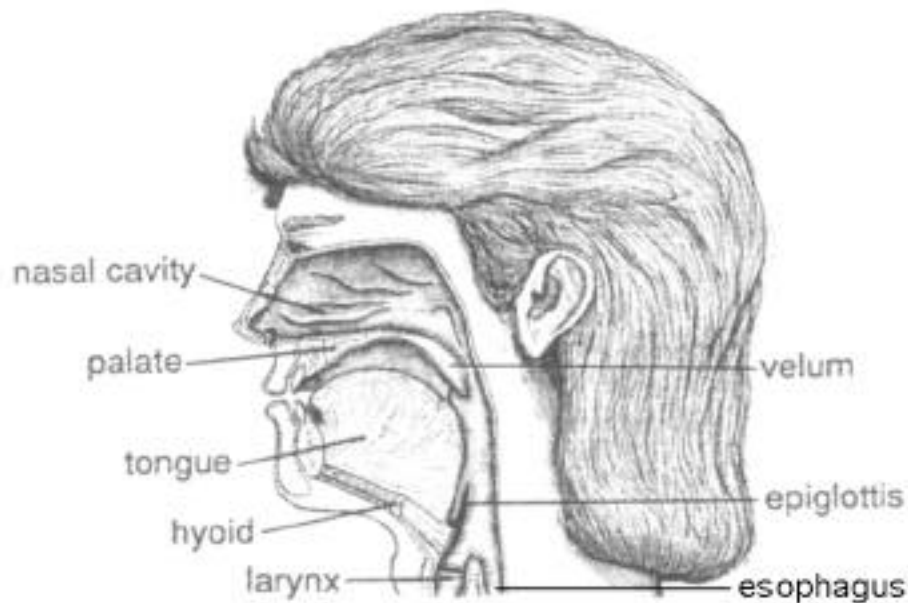
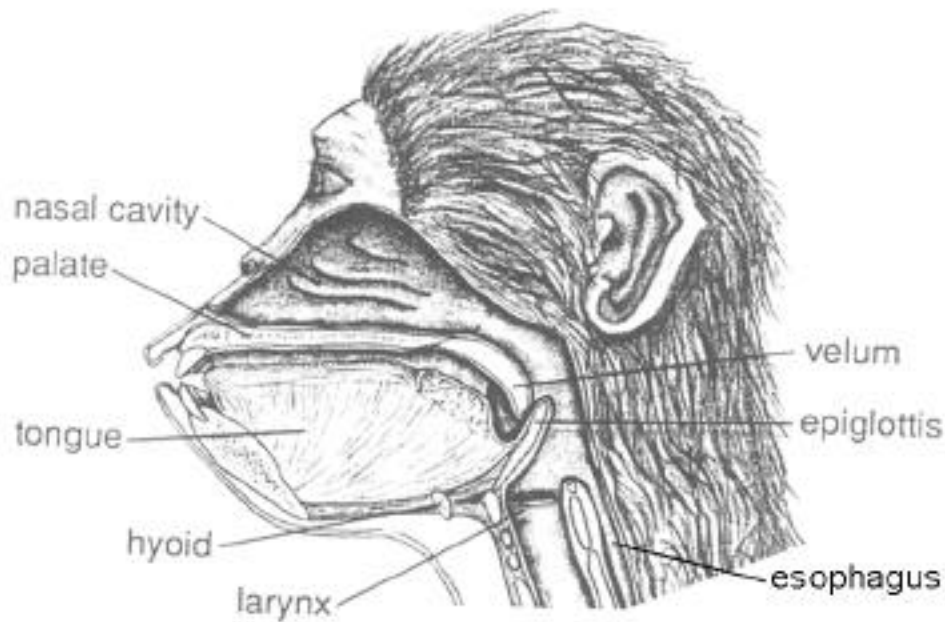


## ADAPTIVE COMPROMISES & IMPERFECTIONS

### WHERE AIRWAYS AND FOODWAYS CROSS: CHOKING



**Note that food in the chimpanzee mouth is kept away from the airway (during chewing) by the epiglottis, while in humans, the much lower larynx leaves the back of the mouth (pharynx) open to the airway during chewing, leading to choking if one inhales while food is in the back of the mouth. Another one of nature's little imperfections. Modified from figs. 2-3 and 2-4 in Philip Lieberman's "Uniquely Human", 1991, page 55.**